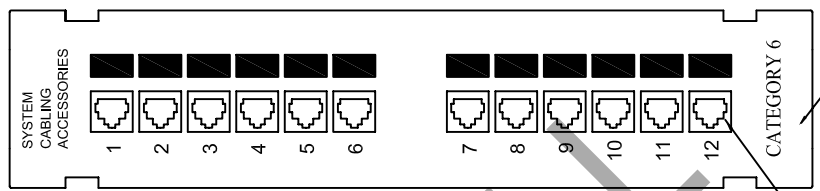
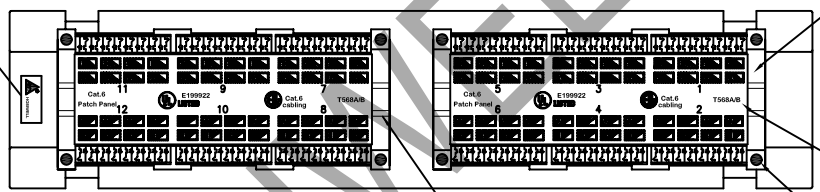


RevNo	Revision note	Date
△		
△		
△		



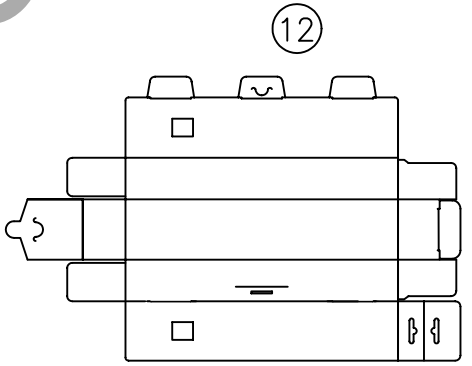
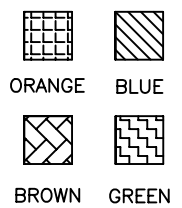
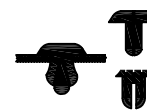
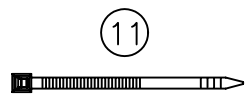
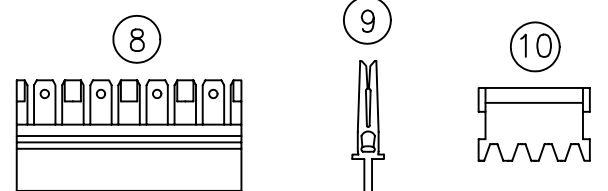
FRONT VIEW



BACK VIEW



7



SPECIFICATION FOR RJ45 JACK

CONTACT MATERIAL : PHOSPHOR BRONZE  
 CONTACT PLATING : 50 MICRO INCH GOLD PLATE IN CONTACT AREA  
 JACK MATERIAL : ABS

ITEM	DESCRIPTION	Q'TY	UNIT
12	PLASTIC BOX 12 PORT	1	PC.
11	LOOSEN CABLE TIE (Length : 16 Cm.)	5	PCS.
10	DUST CAP	24	PCS.
9	TERMINAL J20207PL	96	PCS.
8	HOUSING 8 P	12	PCS.
7	HOLOGRAPHIC SECURITY LABEL	1	PC.
6	PCB PROTECTOR	2	PCS.
5	NYLON PUSH RIVETS (PR-3055) 3 x 5.5 mm.	8	SET.
4	PATCH PANEL WIRING STICKER T568A/B	2	PCS.
3	MODULAR JACK CAT.6	12	SET.
2	PCB PATCH PANEL 12 PORT CAT.6	2	PCS.
1	PATCH PANEL CAT.6 12 PORT FOR 89D BRACKET MOUNT METAL PLATE	1	PC.

Designed by - date	Checked by - date	Approved by - date	Date	Size	Scale
			28/09/2009	A4	-

 HOSIWELL TECHNOLOGY CO., LTD.	Part Name	Unit
	Cat.6 12 Port Mini Patch Panel	-
	Part No. 20321	Issued 1
	Ref. No.	Sheet
Used On.	1 of 1	